



Inventory

INTECHNOLOGY

A SPECIAL SUPPLEMENT FROM INSTORE

The software that handles inventory is getting increasingly better at doing the thinking for you. New programs and hardware can automate basic tasks like data entry, keep track of crucial tasks like reorders and even be monitored via your phone. That frees you up to focus on taking care of customers.



◆ **Compulink JEWELRY SHOPKEEPER** continues to incorporate all the functions uniquely necessary to the retail jewelry industry, from memo tracking and sales analysis to appraisal handling and repair-job envelope printing. And everything is done through a simple interface. **(914) 725-7400, JEWELRYSHOPKEEPER.COM**



◆ **InCom Technical Solutions Inc. PLEXUS** is a database of details of 100,000 products that helps jewelers enter newly received products into their inventory software as much as 75 percent faster. **(905) 682-5392, INCOM.CA**

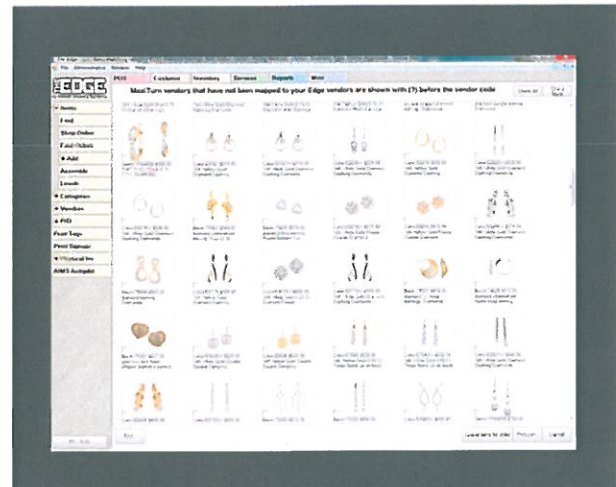


◆ **Quantum Retail The Q SYSTEM** lets you manage your inventory through automated merchandising strategies based on each product's role in your master plan. It understands what you want to achieve with each piece of merchandise and helps align inventory decisions with those objectives. **(888) 801-8198, QUANTUMRETAIL.COM**

◆ **MPI Systems Inc.** The latest version of **GEMINI SOFTWARE** offers enhanced imaging capabilities, with built-in support for Dino-Lite microscope/cameras and one-click image capture, as well as tighter integration with Quickbooks. The Pro edition handles multiple currencies, lets you buy and sell by weight or carat in addition to quantity, and features enhanced diamond parcel management, time clock management, and loyalty or reward programs. **(203) 762-2260, MPISYSTEMS.COM**



◆ **DCIT Corp. BUSINESSMIND FOR JEWELERS** is an integrated business management application for small and mid-sized jewelry stores. Version 5.5 includes over 100 new features and improvements, including Customer Wish List & Special Dates cross-reference report, the ability to issue branch transfers for items during receiving, support for donations and gifts at POS, new charts and graphs for sales trend analysis, city/state autofill based on zipcode, support for promotional gift cards, and support for RFID integration. **WWW.DCIT.COM**



◆ **Abbott Jewelry Systems** An update makes life easier for users of **THE EDGE SOFTWARE** by taking what the program's analytical reports tell it and then acting on that information. MaxiTurn captures sales activity through a POS component, and then dynamically produces a daily restocking plan. **(866) 580-3343, AJSLLC.COM**



◆ **Emforium** Unlike other retail software, **ALL-IN** is securely hosted over the Internet, and offered as a monthly subscription service. That means you can access your jewelry store's information from anywhere that offers access to the Internet. **(866) 808-3932, EMFORIUM.COM**



◆ **VeriFone** The **PAYWARE MOBILE APP** lets you swipe a credit card with a reader that snaps onto your iPhone, take the accompanying signature with a stylus, and e-mail the receipt to your client. Just like at the Apple Store! **(866) 853-7600 PAYWAREMOBILE.COM**

◆ **TJS ZEROSHRINK** is the world's best-selling RFID software for jewelry, taking into account special considerations like the challenges of using radio-frequency identification scanners with metal objects. Label tags fit on standard bar-code labels (but can be scanned exponentially faster), and special tamper-evident tags don't get scanned unless the jewelry they're attached to is really there. **(877) 407-4746, TJS.COM**



◆ **Wise Choice Retail Software RIGHTCLICK VELOCITY** delivers a comprehensive set of POS, inventory and customer-service solutions to jewelry shops with one to five employees. The easy-to-use interface includes more than 250 reports and analytical charts, and its ePartner module makes online selling through sites like Amazon, eBay and RapNet a breeze. **(800) 406-8366, WISECHOICESOFTWARE.COM**



ESDN Live

◆ **ACQA** Retailers can easily bring branded e-commerce catalog and shopping capabilities to their website with **ESDN'S MULTI-BRAND E-COMMERCE TECHNOLOGY**. Retailers protect their consumer data plus have the ability to include their own branded inventory. **WWW.ESDN.COM, (866) 999-ESDN**



◆ **Arch Crown BAR-CODE PRICE TAGS** made of Mylar are excellent for color-coding and inventory control. Computer String Style TT369 and Barbell Style TT340 are available in eight colors. Both printing and tag can withstand ultrasonic cleaning, and tags are adhesive-free where they come in contact with jewelry. **(800) 526-8353, WWW.ARCHCROWN.COM**

INVENTORY NOTES

"Jewelry is metal, and RFID is not really friendly with metal — it's a physics issue. That's why it's always important to read the manual with RFID, even for things like how to place tags on rings." **JOHNNY HAZBUN, TJS**

"Directly comparing RFID to bar codes isn't a good idea, because when you scan bar codes, you're scanning them one at a time. With RFID, you wave the scanner and scan hundreds of tags in a minute, which translates into a lot more data. To manage that data, you need a piece of software built for that." **HAZBUN**

"RFID can improve sales performance, because if you have a simple pad reader on the counter, it can tell you how many times a ring was taken out and shown to a client, how many times it was shown total before it sold, and so on." **HAZBUN**